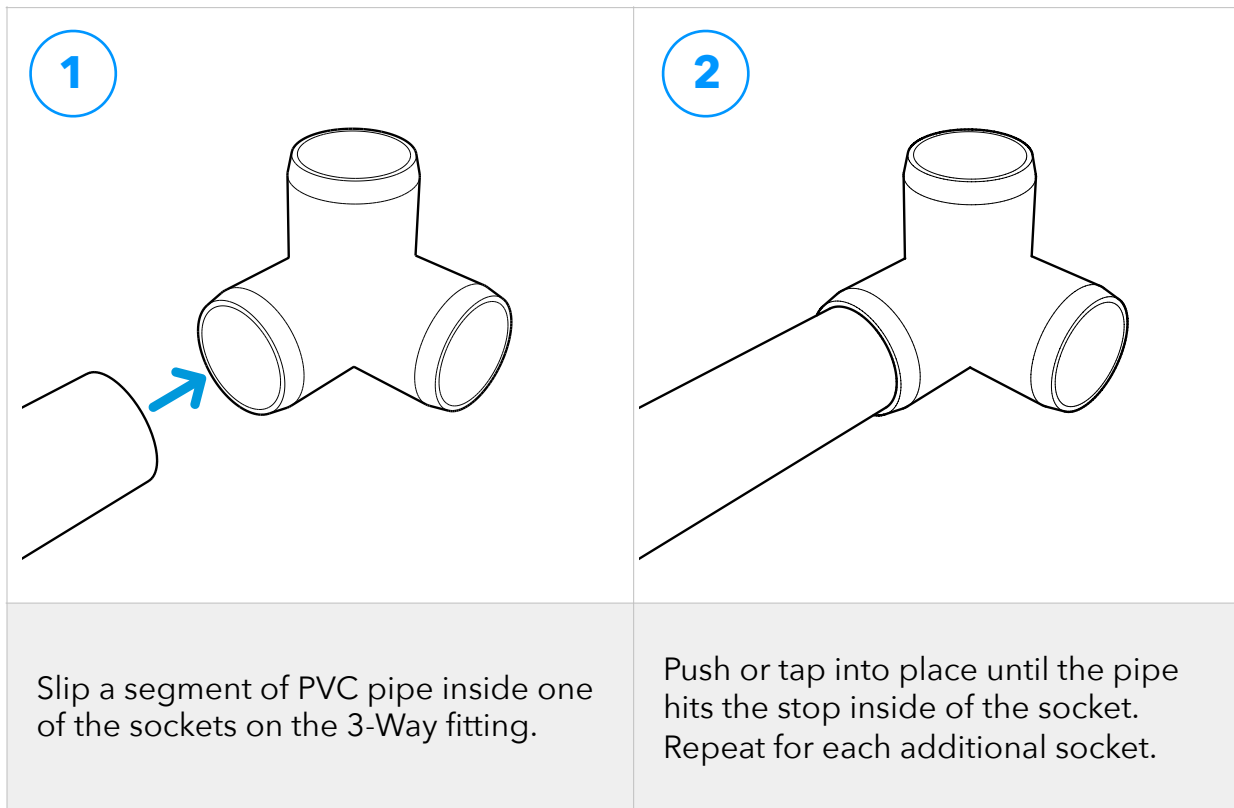


PRODUCT INSTRUCTIONS

3-Way PVC Fitting

FORMUFIT 3-Way PVC Fittings can accept up to three (3) segment of PVC pipe and can be used to create corner joints for cubes and rectangles. To connect this product to PVC pipe, follow the instructions shown below.

Assembly



Securing

For permanent and strong connections, it is recommended to use PVC cement/solvent to attach the PVC pipe and 3-Way PVC Corner fitting.

You can also temporarily connect this fitting by driving a self-tapping screw where the pipe and fitting meet, or apply electrical tape over the end of the pipe before inserting into the fitting for a temporary, yet strong connection.