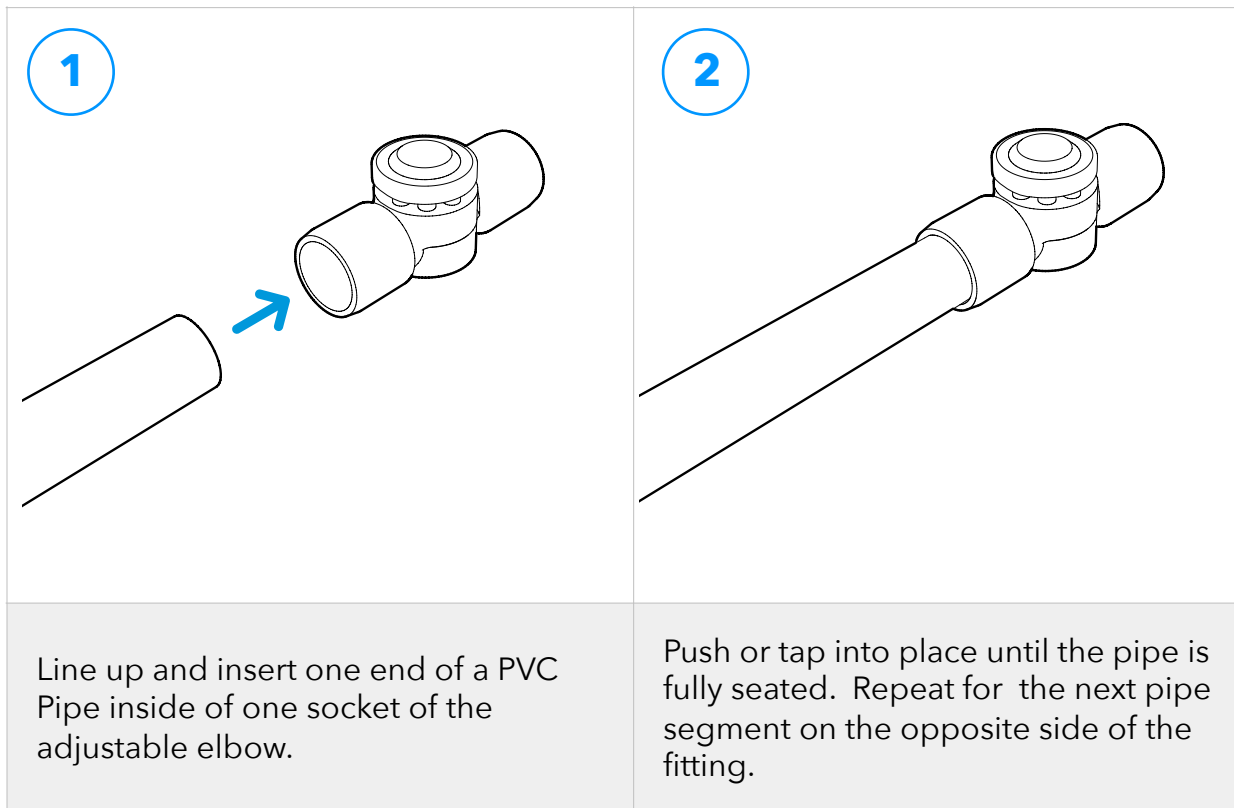


PRODUCT INSTRUCTIONS

External Adjustable Elbow

FORMUFIT External Adjustable Elbows connect two (2) segments of PVC Pipe and adjusts to any angle between 90° and 270°. To connect this product to PVC pipe, follow the instructions shown below.

Assembly

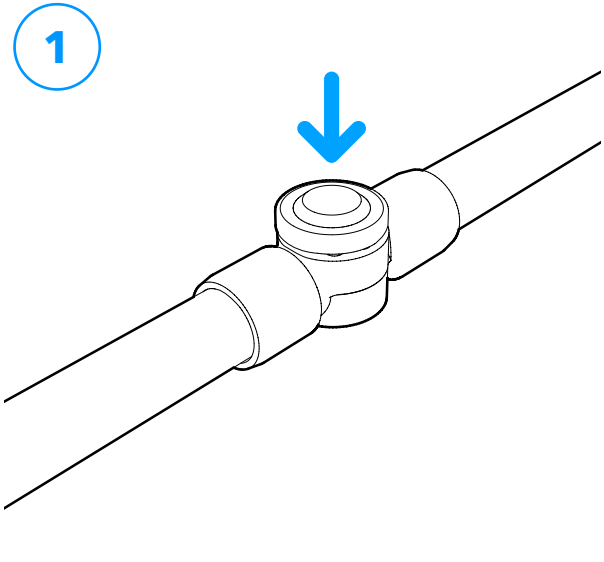
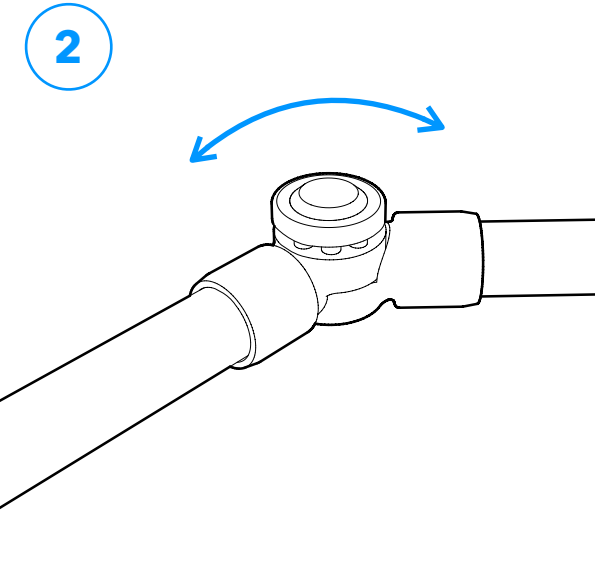


Securing

For permanent and strong connections, it is recommended to use PVC cement/solvent to attach the PVC pipe and the adjustable elbow.

You can also temporarily connect fitting by driving a self-tapping screw where the pipe and cap meet, or apply electrical tape over the end of the PVC pipe prior to insertion for a temporary, yet strong connection.

Usage and Adjustment

 <p>Diagram 1 shows a close-up of the adjustable fitting. A blue arrow points downwards to the top of the fitting, indicating the location of the button to be pressed.</p>	 <p>Diagram 2 shows the fitting with the button fully depressed. A blue curved arrow indicates the rotation of the arms of the elbow to the desired position.</p>
<p>To adjust the elbow, press the button on the top of the adjustable fitting until it is fully depressed.</p>	<p>With the button fully pressed, rotate the arms of the elbow until they are in the position desired, then release the button to lock in place.</p>