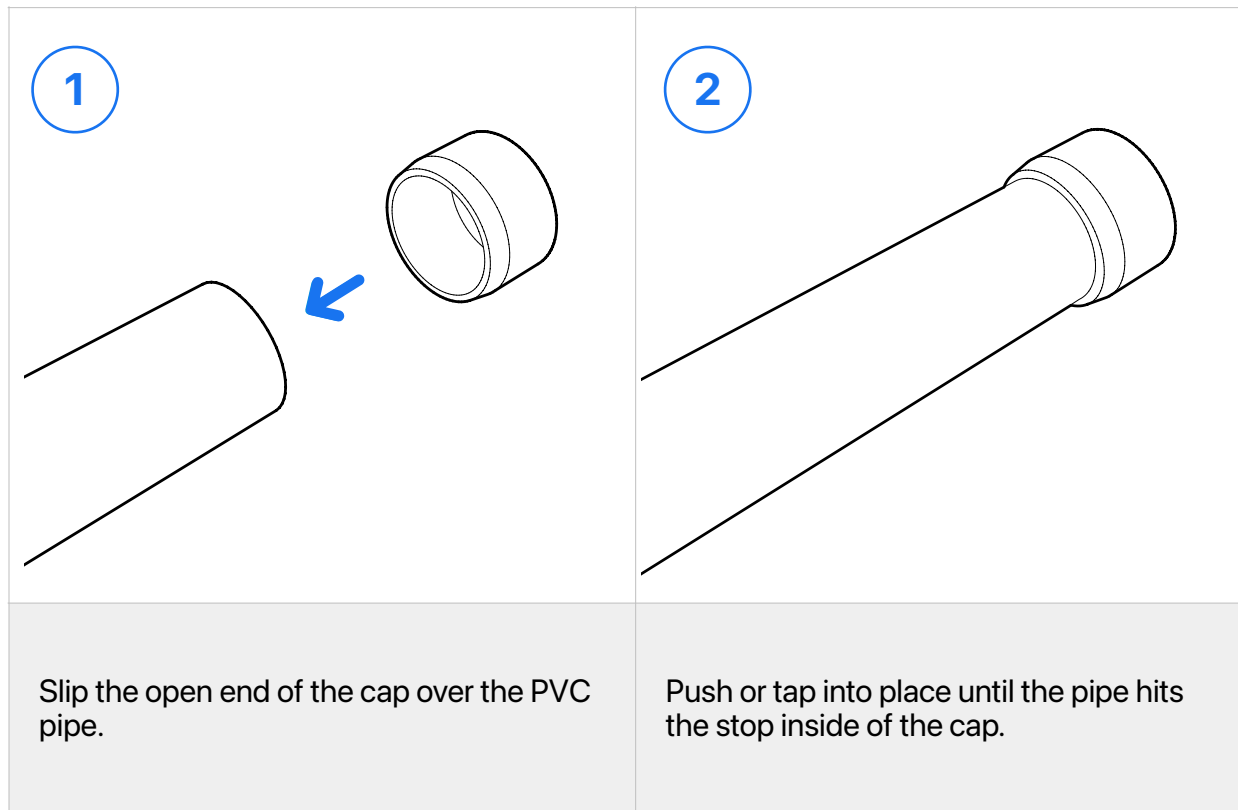


PRODUCT INSTRUCTIONS

External PVC Flat End Cap

FORMUFIT PVC External Flat End Caps flat-top caps fit over the end of a PVC pipe, leaving a slightly raised, flat end. To connect this product to PVC pipe, follow the instructions shown below.

Assembly



Securing

For permanent and strong connections, it is recommended to use PVC cement/solvent to attach the PVC pipe and the External Flat Cap.

You can also temporarily connect this cap by driving a self-tapping screw where the pipe and cap meet, or apply electrical tape over the end of the pipe before inserting into the cap for a temporary, yet strong connection.